

Pablo Picasso

Nature morte aux instruments de musique sur une table, 1913

Graphite pencil and watercolor on paper

31.5 x 23 cm

12 1/2 x 9 in

© 2025 Estate of Pablo Picasso / Artists Rights Society (ARS), New York

Pablo Picasso

Still Life

May 1, 2025 — July 18, 2025 | New York, Upper East Side

Almine Rech New York is pleased to present 'Pablo Picasso: Still Life,' in collaboration with Fundación Almine y Bernard Ruiz-Picasso. The exhibition will be on view from May 1 to July 18, 2025, at the gallery's Upper East Side location.

Almine Rech New York is pleased to present 'Pablo Picasso: Still Life,' in collaboration with Fundación Almine y Bernard Ruiz-Picasso. The exhibition will be on view from May 1 to July 18, 2025, at the gallery's Upper East Side location. While universal fascination with Pablo Picasso's personal life and relationships has generated enormous interest in his portrayals of family, friends, and lovers, some of the painter's most important innovations and powerful statements were made in the area of still life art. According to his biographer John Richardson, "still life is the genre that Picasso would eventually explore more exhaustively and develop more imaginatively than any other artist in history." 'Picasso: Still Life' is one of the few exhibitions ever organized to focus on his dynamic depiction of everyday objects in various mediums throughout his career.

Over forty examples from Picasso's private collection of his own work—including several never before seen by the public—are brought together for the first time in a selective survey of his still life production between 1908 and 1962. The exhibition opens with a group of paintings and drawings that demonstrate the crucial role of still life in the birth and evolution of cubism between 1908 and 1914, centered around the motifs that preoccupied Picasso during this period: the guitar, the bottle and drinking glass, and the table. The extraordinary stylistic diversity and experimentation that characterize the artist's oeuvre overall is demonstrated by flower, fruit, and fish compositions that alternate between classical and conceptual modes of representation.

Picasso's lifelong friend and secretary, Jaime Sabartés, described his still lifes as "a kind of narrative of the intimate life of the man in terms of familiar objects, of what he ate and drank, and loved to keep before his eyes and could not part with." A special feature of the exhibition presents precious pieces of furniture that the artist preserved throughout his life. These include a tasseled guéridon from his Paris studio on Boulevard de Clichy, one of the cradles of cubism, together with paintings that reflect its unique form and decorative details, as well as an embroidered chair and painted screen from the apartments that Picasso shared with his first wife, Olga Khokhlova, during the late teens and early 1920s. These rarely exhibited objects from the artist's estate, seen beside some of the still lifes they inspired, bring us to the intersection of his domestic and creative worlds.

Picasso's obsession with still life during the turbulent years of the Spanish Civil War and Second World War is exemplified by a series of surrealist paintings and prints, distinguished by both their biomorphic symbolism and their autobiographical references to the artist's personal and political affairs. A final passage of the exhibition focuses on the theme of darkness and light that connects much of Picasso's still life work from its earliest to its latest manifestations.

As the artist once revealed to the dealer Daniel-Henry Kahnweiler, "I have never painted an object without an unconfessed sentimental attachment and never marked simply by an aesthetic imperative." 'Picasso: Still Life' explores the passionate sentiments and the aesthetic impulses behind his ever-changing approach to this time-honored genre.

— Ross Finocchio & Delphine Huisinga, Founders of Castille Art Research

Pablo Picasso

Still Life

May 1, 2025 — July 18, 2025 | New York, Upper East Side

“We are honored to collaborate with the Fundación Almine y Bernard Ruiz-Picasso to present 'Picasso: Still Life' at Almine Rech New York. This exhibition, curated by Delphine Huisinga and Ross Finocchio, marks an important milestone as our first official collaboration with the Fundación in the United States and offers a comprehensive exploration of Picasso’s mastery of the still life genre.”

— Paul de Froment, Managing Partner at Almine Rech New York

‘Picasso: Still Life’ will showcase the most significant presentation of the artist’s work at Almine Rech New York since our inaugural 2016 exhibition, ‘Calder and Picasso.’ *We are thrilled to share this extraordinary project with the public and celebrate Picasso’s legacy through this landmark partnership with the Fundación Almine y Bernard Ruiz-Picasso.”

— Ethan Buchsbaum, Partner at Almine Rech New York

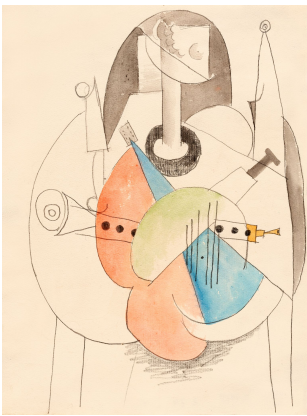
*Almine Rech New York’s inaugural 2016 exhibition, ‘Calder and Picasso,’ inspired subsequent exhibitions of the same concept at numerous esteemed institutions, including the Musée National Picasso-Paris, France; the Museo Picasso Málaga, Spain; the de Young Museum, San Francisco, CA, USA; the High Museum of Art, Atlanta, GA, USA; and the Museum of Fine Arts, Houston, TX, USA.



Portrait of Pablo Picasso, 1913

© Archives Olga-Ruiz Picasso, Fundación Almine y Bernard Ruiz-Picasso, Madrid, all rights reserved

Download image [here](#)



Pablo Picasso

Nature morte aux instruments de musique sur une table, 1913

Graphite pencil and watercolor on paper

31.5 x 23 cm

12 1/2 x 9 in

© 2025 Estate of Pablo Picasso / Artists Rights Society (ARS), New York

© FABIA - Courtesy of Fundación Almine y Bernard Ruiz-Picasso, Madrid

Photo: Hugard & Vanoverschelde

Download image [here](#)